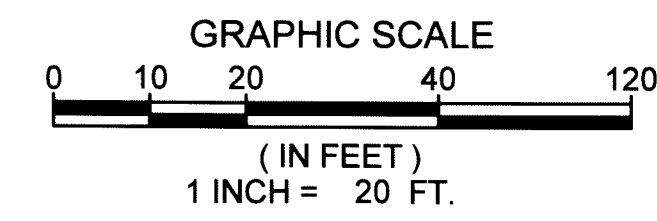
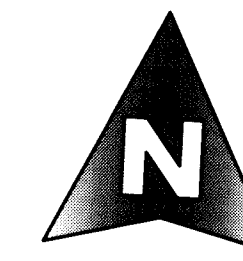


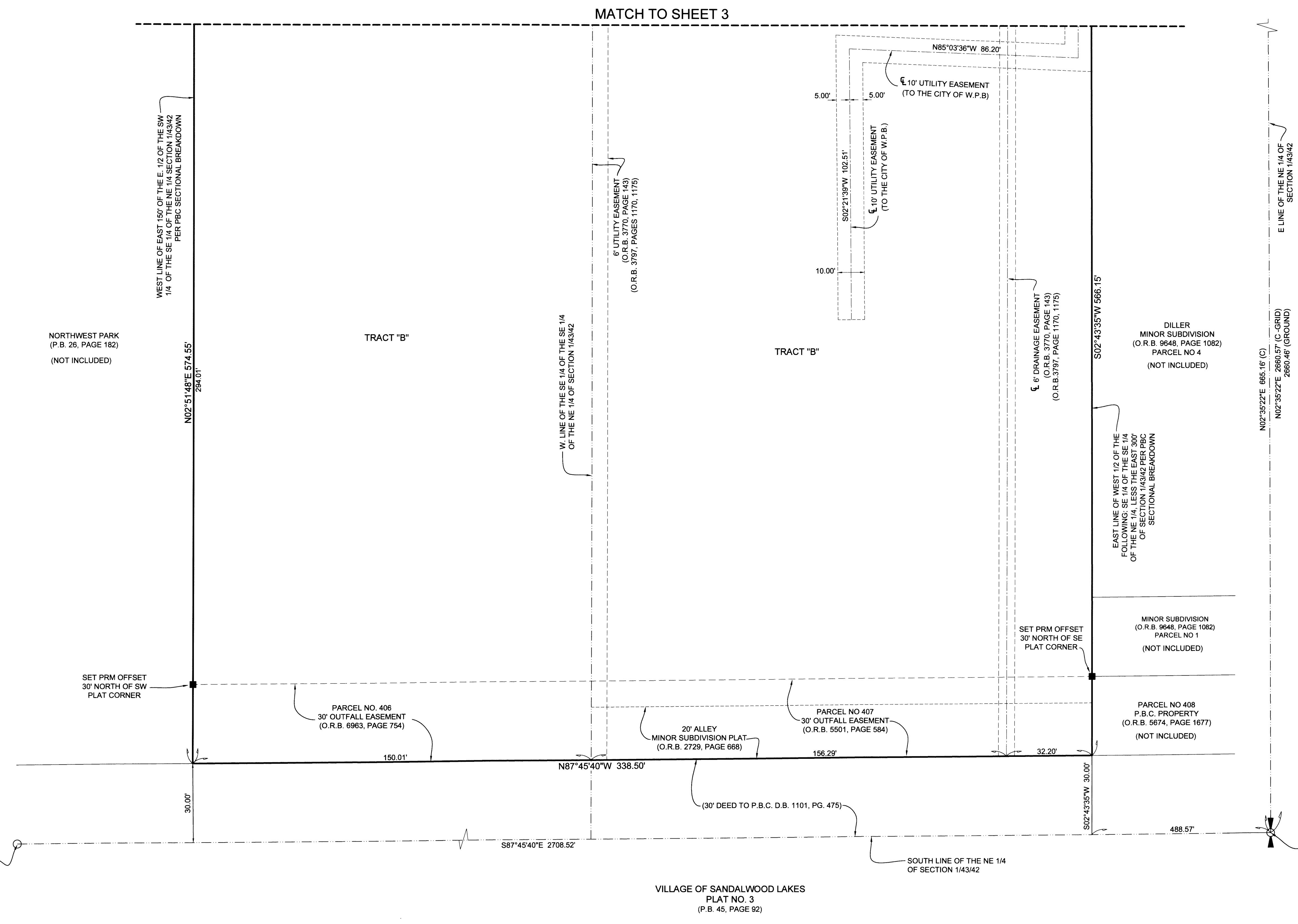
45TH STREET INDUSTRIAL PROPERTIES

LYING IN SECTION 1, TOWNSHIP 43 SOUTH, RANGE 42 EAST, CITY OF WEST PALM BEACH,
PALM BEACH COUNTY, FLORIDA.



137

SHEET 4 OF 4



SYMBOLS

- ⊙ = CENTERLINE
- ▬ = PROPERTY LINE
- D = DEED
- C = CALCULATED
- FND. = FOUND
- NO. = NUMBER
- (OA) = OVERALL
- P.B. = PLAT BOOK
- P.B.C. = PALM BEACH COUNTY
- P.S.M. = PROFESSIONAL SURVEYOR & MAPPER
- C.M. = CONCRETE MONUMENT
- PG. = PAGE
- R/W = RIGHT-OF-WAY
- P.O.C. = POINT OF COMMENCEMENT
- P.O.B. = POINT OF BEGINNING
- O.R.B. = OFFICIAL RECORD BOOK
- D.B. = DEED BOOK
- = SET 4"x4" C.M. WITH 2" ALUMINUM DISK STAMPED PRM LB 2438
- = SET 1/2" I.R. & C. STAMPED "MBSA LB 2438"
- = FOUND I.R. & C. AS SHOWN
- ⊙ = SET NAIL AND DISK STAMPED "MBSA LB 2438"
- ⊕ = SECTION CORNER
- ⊙ = 1/4 SECTION CORNER
- PRM = PERMANENT REFERENCE MONUMENT
- W.P.B. = WEST PALM BEACH

COORDINATE NOTE:

STATE PLANE COORDINATES SHOWN ARE GRID DATUM, NAD 83 1990 ADJUSTMENT, FLORIDA EAST ZONE, COORDINATE SYSTEM 1983 STATE PLANE, TRANSVERSE MERCATOR PROJECTION
LINEAR UNIT = US SURVEY FEET
ALL DISTANCES ARE GROUND
SCALE FACTOR = 1.0000399
GROUND DISTANCE X SCALE FACTOR = GRID DISTANCE
BEARINGS ARE GRID NAD 83/1990 ADJUSTMENT

P.O.C.
SE COR OF NE 1/4 OF SECTION 1/43/42
FOUND 5/8" IRON ROD IN CUT-OUT
P.B.C. POSITION:
N 882091.676
E 949742.310
CERT. CORNER
RECORD NO. 53986
FOUND BRASS DISK IN CUT-OUT
DESCRIPTION ILLEGIBLE S 55°02' E 1.59'
FROM PUBLISHED POSITION



MICHAEL B. SCHORAH & ASSOCIATES, INC.
1850 FOREST HILL BLVD., SUITE 206
WEST PALM BEACH, FLORIDA 33406
EB# 2438 TEL. (561) 968-0080 FAX. (561) 642-9726 LB# 2438

45TH STREET INDUSTRIAL PROPERTIES